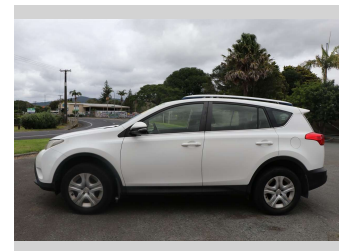
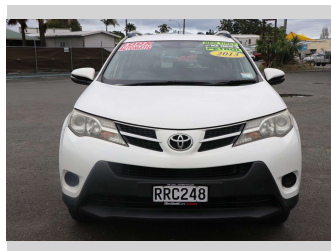



2013 Toyota RAV4 GX 2.5P SUV 6A




Purchase Price **\$19,990**
Includes GST, Registration & Licensing

Finance may be available on this vehicle. Ask one of our friendly staff for more information.



Gain peace of mind with Mechanical Breakdown Insurance. **Ask us how.**



Top features

None Listed

Body Style
4 door, Station Wagon

Odometer
126,291 km

Engine
2494 cc, Electronic Fuel

Fuel Type
Petrol

Transmission
CVT

Wheels
-

VIN
JTMBFREV00D027336

Interior
-

Safety



Based on 2025 UCSR rating for 13-19 models

Reg No.
RRC248

Ext Colour
White

History
NZ New

Seats
5 seats

CO2 Emissions
★★★☆☆☆
220 grams/km

Energy Economy
★★★★☆☆

Annual fuel cost of \$3,720
9.5L per 100km

Cost per year is an estimate based on petrol price of \$2.80 per litre and an average distance of 14000 km. Emissions and Energy Economy figures standardised to 3P WLTP.

Stock ID: 1506204