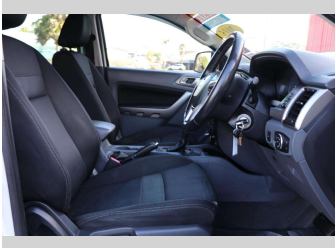
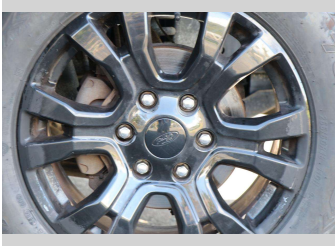
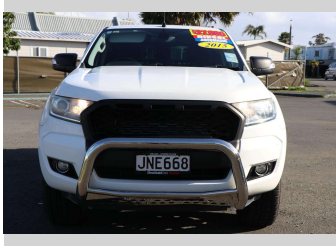


2015 Ford Ranger XLT DOUBLE CAB W/S A



Purchase Price

Includes GST, Registration & Licensing

\$27,990

Finance may be available on this vehicle. Ask one of our friendly staff for more information.



Gain peace of mind with Mechanical Breakdown Insurance. **Ask us how.**



Top features

None Listed

Body Style

4 door, Ute

Odometer

136,279 km

Engine

3198 cc, Electronic Fuel

Fuel Type

Diesel

Transmission

CVT

Wheels

-

VIN

MNAUMFF50FW513443

Interior

-

Safety



Based on 2024 VSRR rating

Reg No.

JNE668

Ext Colour

White

History

NZ New

Seats

5 seats

CO2 Emissions

★ ★ ☆ ☆ ☆ ☆

257 grams/km

Energy Economy

★ ☆ ☆ ☆ ☆ ☆

**Annual fuel cost of \$3,780
9.7L per 100km**

Cost per year is an estimate based on diesel price of \$2.00 per litre and an average distance of 14000 km. Includes Road User Charges (RUC). Emissions and Energy Economy figures standardised to 3P WLTP.

Stock ID: 1505901



Archibald Cars | Phone 09 408 1900 | Email sales@amotors.co.nz
143 Commerce Street, Kaitia, New Zealand
www.archibaldcars.co.nz