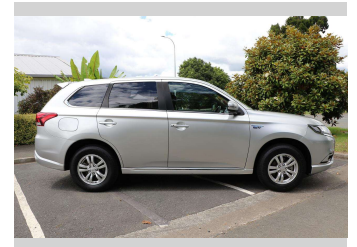
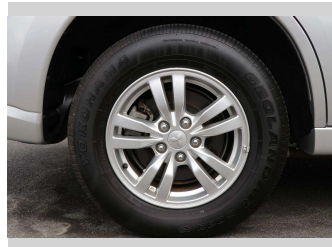
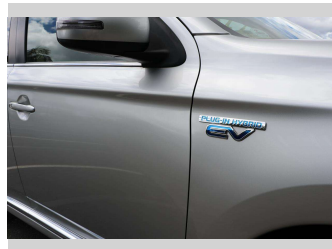



# 2019 Mitsubishi Outlander PHEV




**Purchase Price** **\$32,990**  
Includes GST, Registration & Licensing

Finance may be available on this vehicle. Ask one of our friendly staff for more information.



Gain peace of mind with Mechanical Breakdown Insurance. **Ask us how.**



**Top features**

- » 4WD/4x4
- » ABS Brakes
- » Air Bag(s)
- » Air Conditioning
- » Alloys
- » Blue Tooth
- » Central Locking
- » Electric Mirrors
- » Electric Windows
- » Forward Collision Aler...
- » Heated Seats
- » Keyless Operating Syst...
- » Lane Deviation
- » Parking Sensors
- » Remote Locking
- » Reversing Camera
- » Tinted Windows

Body Style  
**5 door, Station Wagon**

Odometer  
**44,677 km**

Engine  
**2350 cc, Plug-In Hybrid**

Fuel Type  
**Petrol**

Transmission  
**CVT**

Wheels  
-

VIN  
**7AT0CJ3MX23700734**

Interior  
**Black**

Safety



Based on 2024 UCSR rating for 12-21 models

Reg No.  
**QGN693**

Ext Colour  
**Silver**

History  
-

Seats  
**5 seats**

CO2 Emissions  
**★★★★☆**  
**42 grams/km**

Energy Economy  
**★★★★☆☆**

**Annual fuel cost not available**  
**6.2L per 100km**

Actual figures and cost per year will vary based on proportion of hybrid mode driving and battery charging schedule. Emissions and Energy Economy figures standardised to 3P WLTP.

**Stock ID: 563276**



Waipapa Autocourt | Phone 09 407 6430 | Email info@waipapacars.co.nz  
2047 State Highway 10, Waipapa, Kerikeri 0295, New Zealand  
www.waipapacars.co.nz