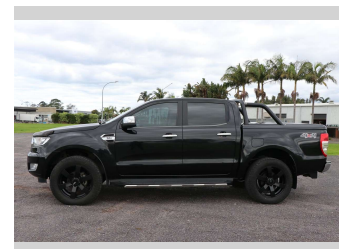
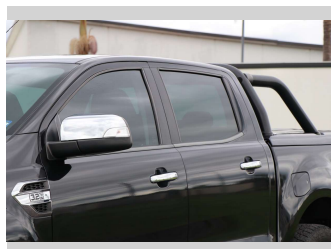
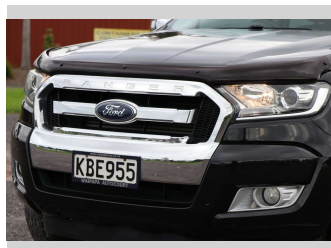



# 2016 Ford Ranger XLT DOUBLE CAB W/SA




**Purchase Price** **\$37,990**  
Includes GST, Registration & Licensing

Finance may be available on this vehicle. Ask one of our friendly staff for more information.



Gain peace of mind with Mechanical Breakdown Insurance. **Ask us how.**



**Top features**

None Listed

Body Style  
**4 door, Ute**

Odometer  
**78,125 km**

Engine  
**3198 cc, Electronic Fuel**


Fuel Type  
**Diesel**

Transmission  
**CVT**

Wheels  
-

VIN  
**MNAUMFF50GW595097**

Interior  
-

Safety  
  
Based on 2025 VSRR rating

Reg No.  
**KBE955**

Ext Colour  
**Black**

History  
**NZ New**

Seats  
**5 seats**

CO2 Emissions  
★☆☆☆☆  
**269 grams/km**

Energy Economy  
★☆☆☆☆  
**Annual fuel cost of \$3,950**  
**10.3L per 100km**

Cost per year is an estimate based on diesel price of \$2.00 per litre and an average distance of 14000 km. Includes Road User Charges (RUC). Emissions and Energy Economy figures standardised to 3P WLTP.

**Stock ID: 1506203**



Waipapa Autocourt | Phone 09 407 6430 | Email info@waipapacars.co.nz  
2047 State Highway 10, Waipapa, Kerikeri 0295, New Zealand  
www.waipapacars.co.nz