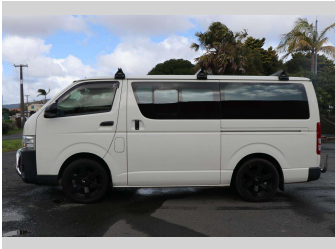
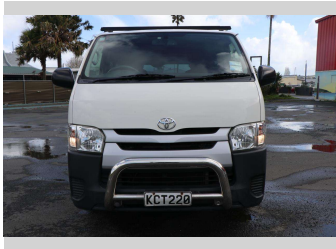


# 2016 Toyota Hiace ZL TD 3.0DT/5MT



## Purchase Price

Includes GST, Registration & Licensing

**POA**

Finance may be available on this vehicle. Ask one of our friendly staff for more information.



Gain peace of mind with Mechanical Breakdown Insurance. **Ask us how.**



## Top features

None Listed

Body Style

**5 door, Light Van**

Odometer

**118,435 km**

Engine

**2982 cc, Electronic Fuel**

Fuel Type

**Diesel**

Transmission

**Manual**

Wheels

-

VIN

**JTFHT02P505024471**

Interior

-

Safety



Based on 2024 UCSR rating for 05-19 models

Reg No.

**KCT220**

Ext Colour

**White**

History

**NZ New**

Seats

**2 seats**

CO2 Emissions

★ ★ ☆ ☆ ☆ ☆

**242 grams/km**

Energy Economy

★ ★ ☆ ☆ ☆ ☆

**Annual fuel cost of \$3,670  
9.3L per 100km**

Cost per year is an estimate based on diesel price of \$2.00 per litre and an average distance of 14000 km. Includes Road User Charges (RUC). Emissions and Energy Economy figures standardised to 3P WLTP.

**Stock ID: 1506009**



Archibald Cars | Phone 09 408 1900 | Email [sales@amotors.co.nz](mailto:sales@amotors.co.nz)  
143 Commerce Street, Kaitaia, New Zealand  
[www.archibaldcars.co.nz](http://www.archibaldcars.co.nz)