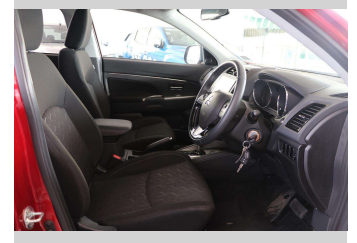
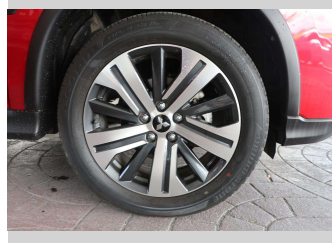
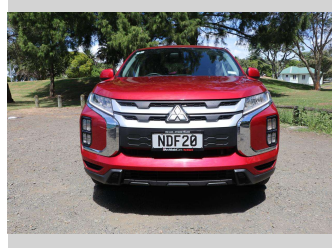


# 2020 Mitsubishi ASX LS 2.0P/CVT



Purchase Price

**\$24,990**

Includes GST, Registration & Licensing

Finance may be available on this vehicle. Ask one of our friendly staff for more information.



Gain peace of mind with Mechanical Breakdown Insurance. **Ask us how.**



## Top features

None Listed

Body Style

**5 door, Station Wagon**

Odometer

**46,772 km**

Engine

**1998 cc, Electronic Fuel**

Fuel Type

**Petrol**

Transmission

**CVT**

Wheels

-

VIN

**JMFXTGA2WMU002254**

Interior

-

Safety



Based on 2023 UCSR rating for 16-19 models

Reg No.

**NDF20**

Ext Colour

**Red**

History

**NZ New**

Seats

**5 seats**

CO2 Emissions

★★★★☆

**196 grams/km**

Energy Economy

★★☆☆☆☆

**Annual fuel cost of \$3,330  
8.5L per 100km**

Cost per year is an estimate based on petrol price of \$2.80 per litre and an average distance of 14000 km. Emissions and Energy Economy figures standardised to 3P WLTP.

**Stock ID: 1505526**



Archibald Cars | Phone 09 408 1900 | Email sales@amotors.co.nz  
143 Commerce Street, Kaitaia, New Zealand  
www.archibaldcars.co.nz