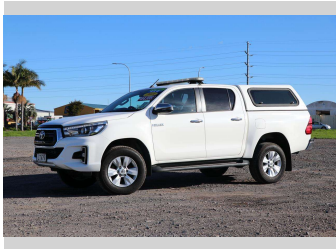


2018 Toyota Hilux SR5 TD DC 2.8D/4WD



Purchase Price

Includes GST, Registration & Licensing

\$42,990

Finance may be available on this vehicle. Ask one of our friendly staff for more information.



Gain peace of mind with Mechanical Breakdown Insurance. **Ask us how.**



Top features

- » 3500KG Towing Braked
- » 4X4
- » ABS Brakes
- » Air Bag(s)
- » Air Conditioning
- » Alloys
- » Canopy
- » Central Locking
- » Daytime Running Lights
- » Electric Mirrors
- » Electric Windows
- » Keyless Operating Syst...
- » Remote Locking
- » Reversing Camera
- » Tow Bar

Body Style

4 door, Ute

Odometer

124,823 km

Engine

2755 cc, Electronic Fuel

Fuel Type

Diesel

Transmission

Auto

Wheels

-

VIN

MR0HA3CD100421405

Interior

Black

Safety



Based on 2024 UCSR rating for 15-19 models

Reg No.

LTW79

Ext Colour

White

History

NZ New

Seats

5 seats

CO2 Emissions

★ ★ ☆ ☆ ☆ ☆

252 grams/km

Energy Economy

★ ★ ☆ ☆ ☆ ☆

**Annual fuel cost of \$3,750
9.6L per 100km**

Cost per year is an estimate based on diesel price of \$2.00 per litre and an average distance of 14000 km. Includes Road User Charges (RUC). Emissions and Energy Economy figures standardised to 3P WLTP.

Stock ID: 1505629



Waipapa Autocourt | Phone 09 407 6430 | Email info@waipapacars.co.nz
2047 State Highway 10, Waipapa, Kerikeri 0295, New Zealand
www.waipapacars.co.nz