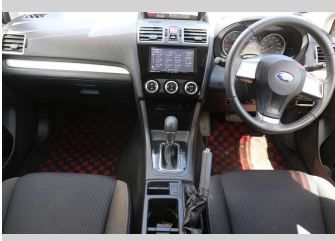
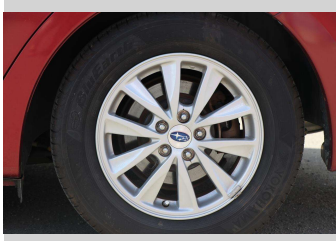
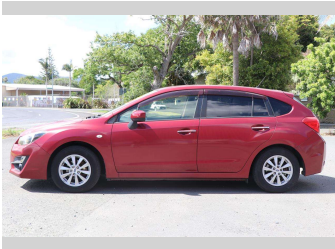


# 2015 Subaru Impreza



Purchase Price

**\$13,990**

Includes GST, Registration & Licensing

Finance may be available on this vehicle. Ask one of our friendly staff for more information.



Gain peace of mind with Mechanical Breakdown Insurance. **Ask us how.**



Top features

None Listed

Body Style

**Hatchback**

Odometer

**131,659 km**

Engine

**1599 cc, Electronic Fuel**

Fuel Type

**Petrol**

Transmission

**CVT**

Wheels

-

VIN

**7AT0GF09X24029475**

Interior

-

Safety



Based on 2024 UCSR rating for 12-16 models

Reg No.

**QYD236**

Ext Colour

**Red**

History

**Ex-Overseas**

Seats

**5 seats**

CO2 Emissions

★★★★☆

**153 grams/km**

Energy Economy

★★★★☆☆

**Annual fuel cost of \$2,590  
6.6L per 100km**

Cost per year is an estimate based on petrol price of \$2.80 per litre and an average distance of 14000 km. Emissions and Energy Economy figures standardised to 3P WLTP.

**Stock ID: 557841**



Waipapa Autocourt | Phone 09 407 6430 | Email [info@waipapacars.co.nz](mailto:info@waipapacars.co.nz)  
2047 State Highway 10, Waipapa, Kerikeri 0295, New Zealand  
[www.waipapacars.co.nz](http://www.waipapacars.co.nz)