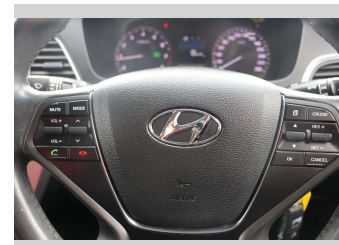
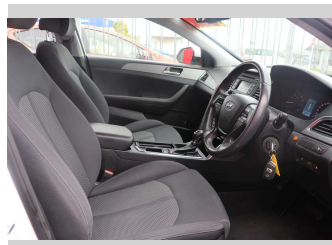
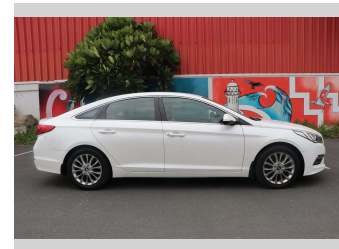
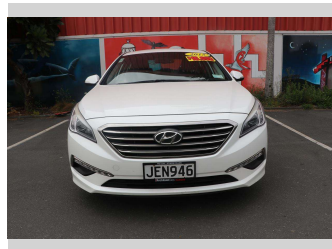


# 2015 Hyundai Sonata 2.4P/6AT/SL/4DR/5S



Purchase Price

**\$13,990**

Includes GST, Registration & Licensing

Finance may be available on this vehicle. Ask one of our friendly staff for more information.



Gain peace of mind with Mechanical Breakdown Insurance. **Ask us how.**



## Top features

None Listed

Body Style

**4 door, Sedan**

Odometer

**103,178 km**

Engine

**2359 cc, Electronic Fuel**

Fuel Type

**Petrol**

Transmission

**CVT**

Wheels

-

VIN

**KMHE241FMFA089094**

Interior

-

Safety



Based on 2023 VSRR rating

Reg No.

**JEN946**

Ext Colour

**White**

History

**NZ New**

Seats

**5 seats**

CO2 Emissions

★ ★ ★ ☆ ☆ ☆

**216 grams/km**

Energy Economy

★ ☆ ☆ ☆ ☆ ☆

**Annual fuel cost of \$3,610  
9.2L per 100km**

Cost per year is an estimate based on petrol price of \$2.80 per litre and an average distance of 14000 km. Emissions and Energy Economy figures standardised to 3P WLTP.

**Stock ID: 1505349**



Archibald Cars | Phone 09 408 1900 | Email sales@amotors.co.nz  
143 Commerce Street, Kaitaia, New Zealand  
www.archibaldcars.co.nz